



# MONTHLY MEMBERSHIP PROGRESS REPORT

District 8 I

Results as of: 04/30/2018

GMT: JOE AL PICONE

LOCATION LOUISIANA

GMT CA

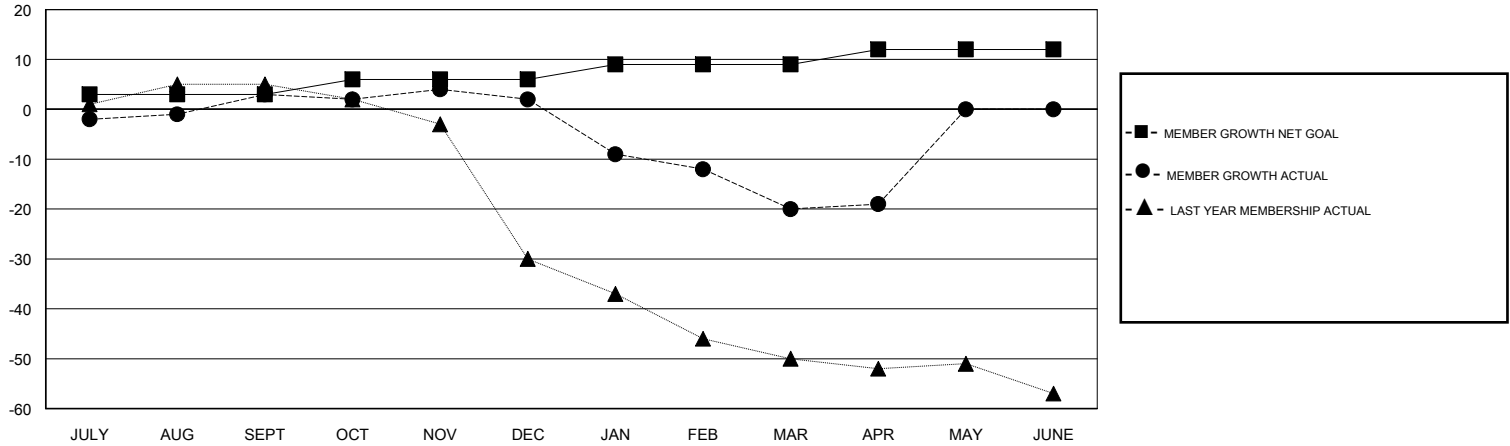
Clubs			
RESULTS FOR 2017-2018			
QUARTER	NEW CLUB GOAL	NEW CLUBS	DROPPED CLUBS
JULY/AUG/SEPT	0	0	0
OCT/NOV/DEC	0	0	0
JAN/FEB/MAR	0	0	0
APR/MAY/JUNE	0	0	0

Members			
RESULTS FOR 2017-2018			
QUARTER	MEMBER GROWTH NET GOAL	MEMBER GROWTH ACTUAL	DROPPED MEMBERS ACTUAL (including transfers)
JULY/AUG/SEPT	3	13	7
OCT/NOV/DEC	3	8	8
JAN/FEB/MAR	3	6	28
APR/MAY/JUNE	3	5	3

GOALS AND ACTUAL NEW CLUBS CUMULATIVE



GOALS AND ACTUAL MEMBERS CUMULATIVE



DROPPED CLUBS: 0	14 CLUBS OF 27 ADDED 1 OR MORE NEW MEMBERS	<u>GENDER DISTRIBUTION</u> MALE 496 (77.14%) FEMALE 147 (22.86%) Women Percentage Fiscal Year Goal: 0%
<u>DROPPED MEMBERS</u> DECEASED 4 CLUB CANCELLED 0 OTHER 42 TOTAL 46	<a href="#">CLICK HERE FOR CUMULATIVE MEMBERSHIP DATA</a>	TOTAL FAMILY UNIT MEMBERS 47 FAMILY MEMBERS PAYING HALF DUES 24